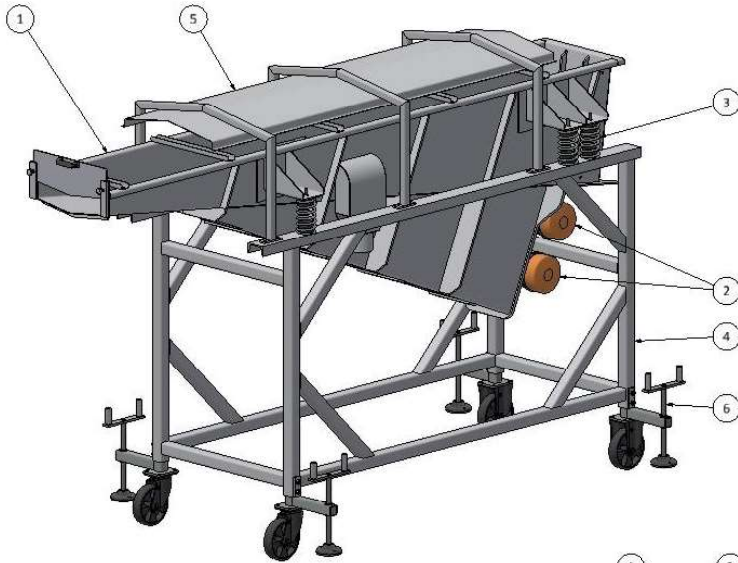


# VIBRATING RECEPTION UNIT FOR FRIT RVF

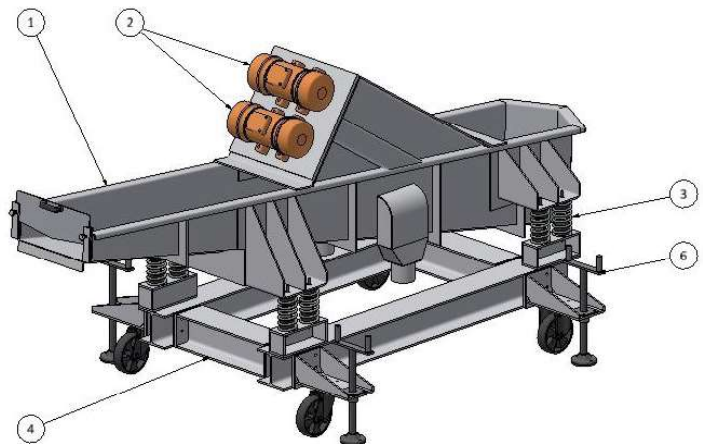


The RVF vibrating reception unit for frit is designed to collect, solidify, cool and drip frits from basin furnaces. Its main structure includes:

- A central body that houses the collection and cooling basin. This body is solidly connected to the motor-vibrators, which transmit the movement necessary for the transport of the frits. Made of AISI 304 stainless steel.
- A support frame equipped with caster wheels to facilitate moving the machine and adjustable feet to secure it securely to the ground during operation.
- An AISI 304 stainless steel cover to prevent splashes of water or hot material on the central body.
- The central body is supported by the support frame via springs and anti-vibration pads.



RVF standard version

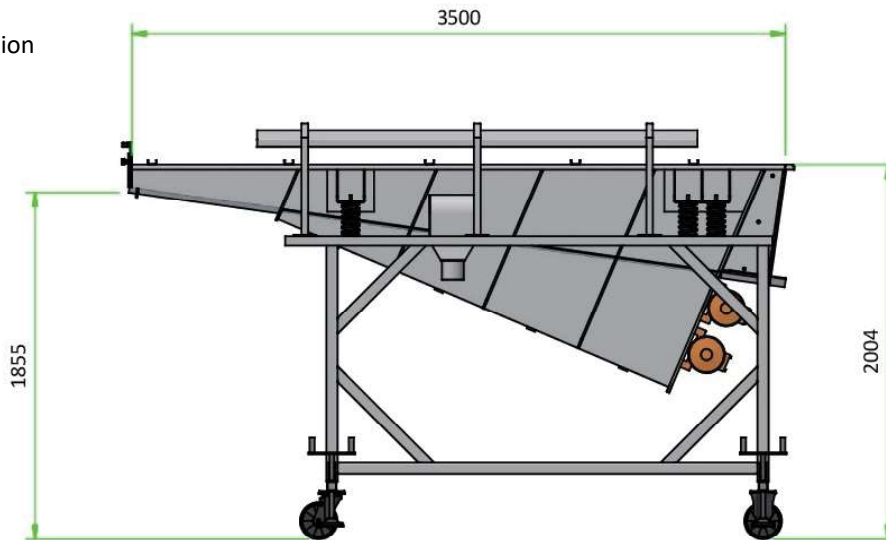


RVF-S lowered version

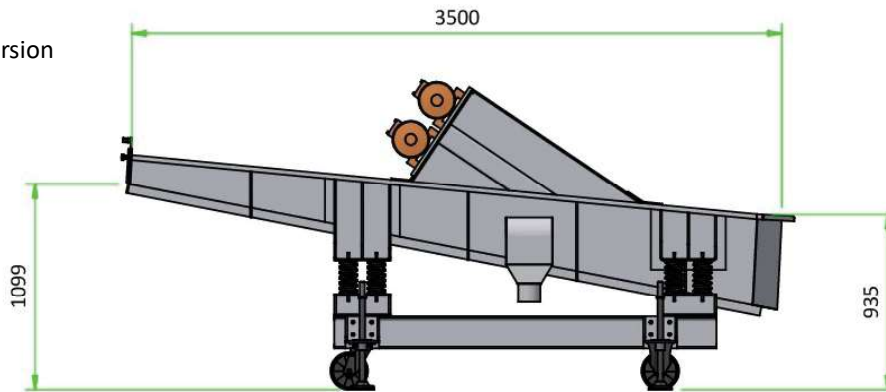
1	CENTRAL BODY
2	MOTOR-VIBRATORS
3	ANTI-VIBRATION SYSTEM
4	SUPPORT FRAME
5	COVER
6	ADJUSTABLE FEET

## MAIN FEATURES

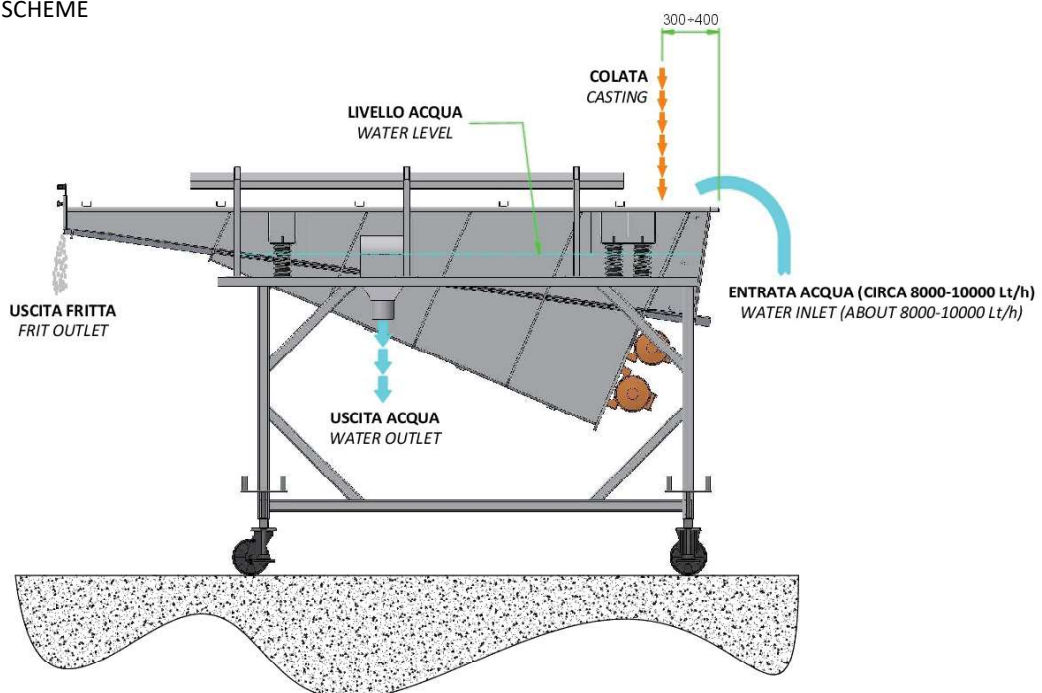
RFV standard version

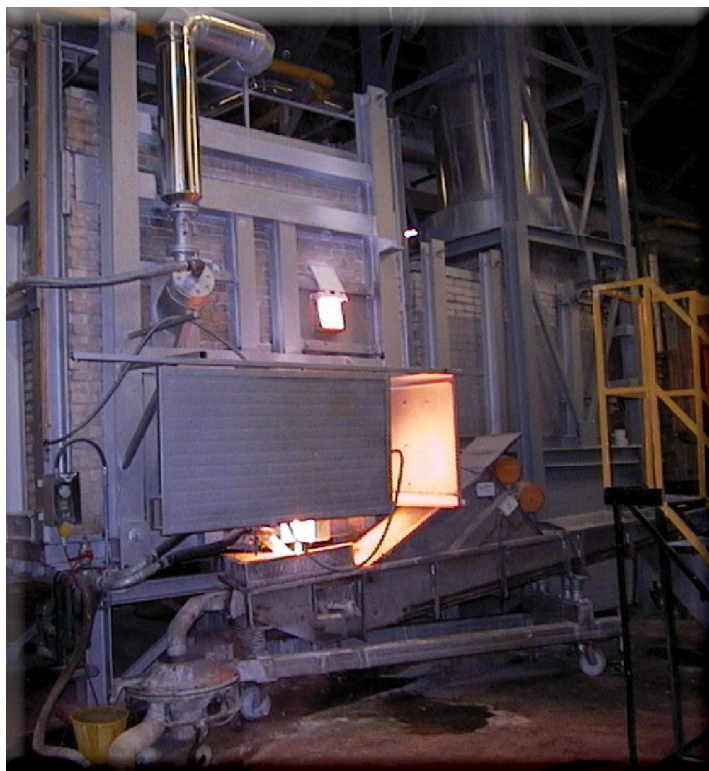


RFV-S lowered version



## OPERATING SCHEME





Dimensions in millimetres. Non-binding data.

Novatech reserves the right to modify the technical data indicated above. For any limitations of the product, consult the relevant Use and Maintenance Manual.



Novatech Srl  
S.S. 467, n.127  
42013 S. Antonino di Casalgrande (RE)  
Italy  
Tel. +39 0536 823344

info@nova-tech.it  
www.nova-tech.it