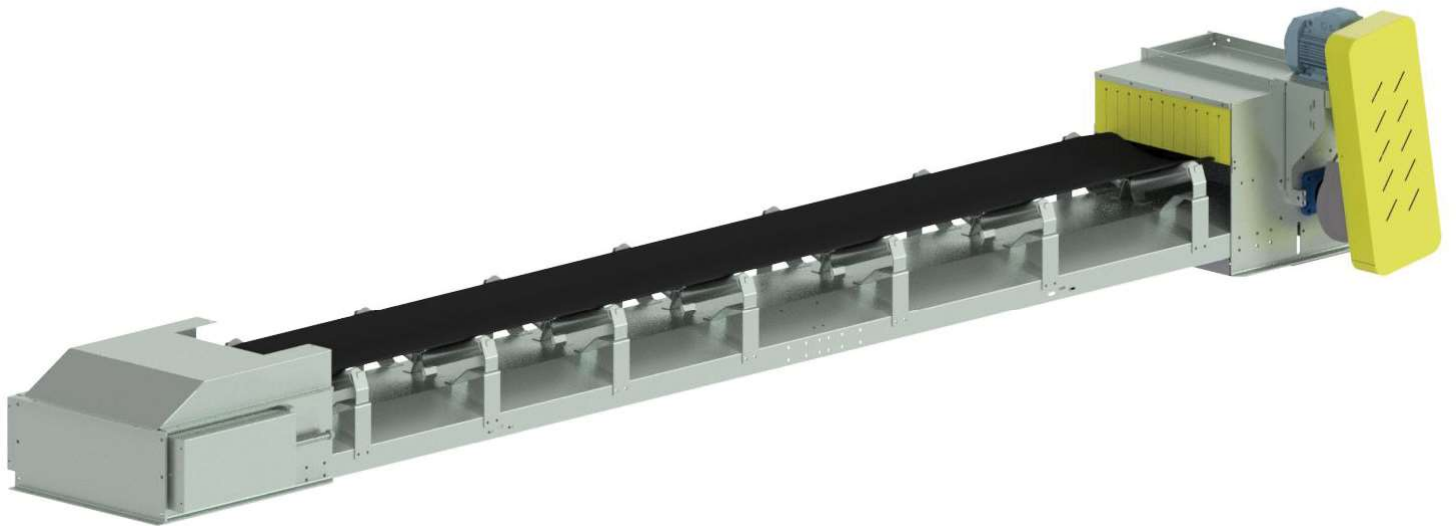


# CONVEYOR BELT



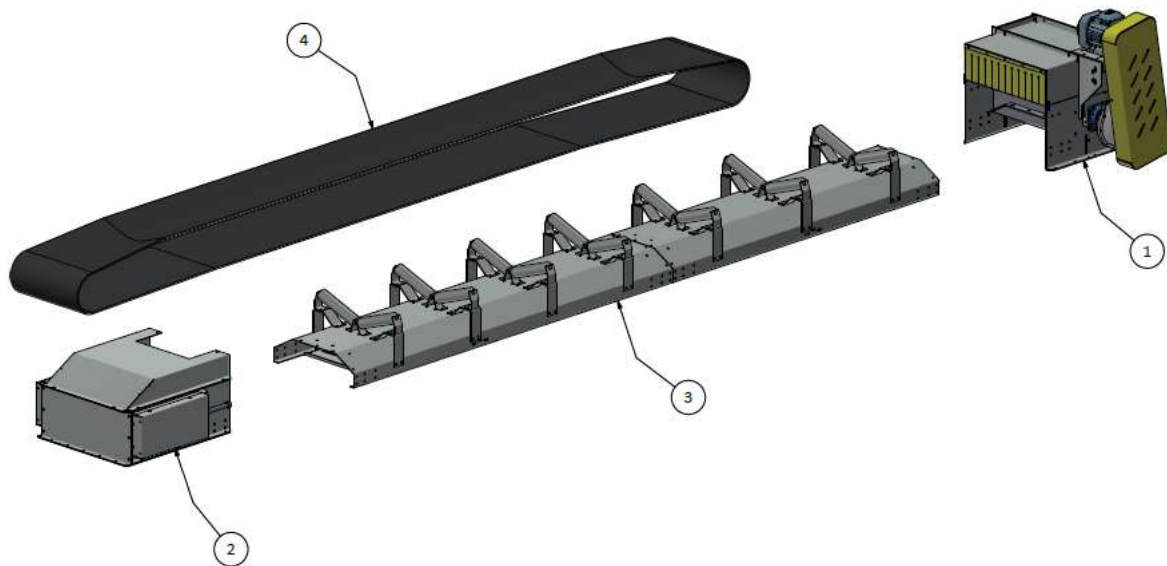
The conveyor belts produced by Novatech are used for the transport of bulk materials. They can be made in different versions and are designed to respond to the specific needs of use and the regulations in force in the various industrial sectors.

Conveyor belts are divided into two different types:

- Flat section conveyor belts
- Concave section conveyor belts

Flat section conveyor belts, particularly in the ceramic sector, are used for loading storage silos and press feeding lines; in the recycling and waste treatment sector they are often used for the transport of materials such as paper, cardboard, plastic and other light packaging.

Concave section conveyor belts, based on their configuration - a pair or a trio of rollers - can be used in many industrial sectors for the transport of both powdered and bulk materials. Concave section conveyor belts are used in the ceramic and building materials sector, in the cement industry and in concrete mixing plants, in the quarrying and mining sector, in waste recycling plants and in many other industrial sectors.

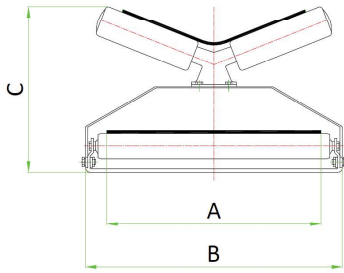


1	TOWING HEAD WITH MOTORIZATION
2	RETURN HEAD (BOTTOM END)
3	CASING + BELT SUPPORT ROLLERS
4	BELT

Conveyor belts are mainly composed by:

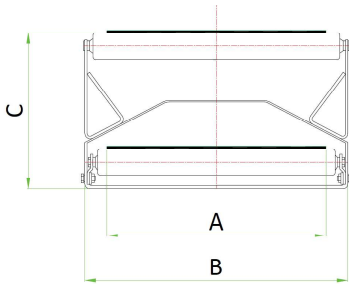
- Towing head, made of sheet metal and thick profiles, where the motorization is positioned. The drum, the drive shaft and the related supports are sized based on the characteristics and use of the conveyor belt and are made in such a way as to guarantee easy maintenance and replacement.
- Motorization, composed of a reduction gear and an electric motor.
- The type of reduction gear can be:
  - o pendulum, with transmission via V-belts and grooved pulleys
  - o direct transmission, with reduction gear directly coupled to the drive shaft
  - o coaxial, with chain transmission
- Return head, made of sheet metal and thick profiles, where the drum and return shaft are housed, appropriately sized and supported by bearings mounted externally to the side plate. The threaded bar system for tensioning and aligning the rubber ring is also installed in the return head.
- Intermediate casings in shaped sheet metal, made of modular elements fixed to each other using joining plates and high-resistance bolts.
- Belt ring made by rubber with hot vulcanization joint. The rubber ring is characterized by a synthetic fiber core, polyester or nylon, and anti-abrasive and anti-cut covering material, with excellent resistance to tearing, humidity and atmospheric agents

Concave belt section (pair of V-shaped rollers)



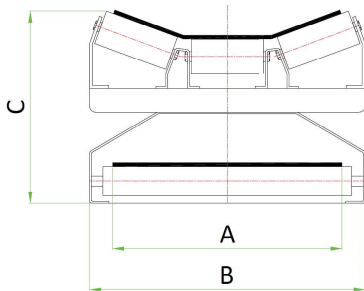
Modello Model	A	B	C	Portata T/h Capacity T/h
NC 300	300	380	300	11
NC 400	400	480	320	19
NC 500	500	580	335	43
NC 600	600	680	350	76
NC 800	800	880	480	130

Flat belt section



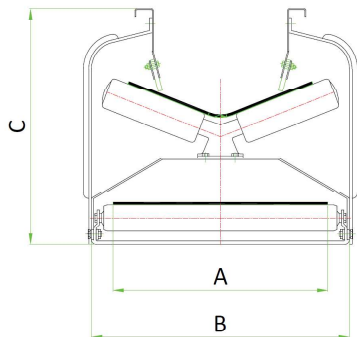
Modello Model	A	B	C	Portata T/h Capacity T/h
NP 300	300	380	300	5,5
NP 400	400	480	300	9,5
NP 500	500	580	300	21
NP 600	600	680	300	38
NP 800	800	880	330	72

Concave belt section (trio of rollers)



Modello Model	A	B	C	Portata T/h Capacity T/h
NCP 300	300	380	305	11
NCP 400	400	480	320	19
NCP 500	500	580	335	43
NCP 600	600	680	350	76
NCP 800	800	880	480	130

Concave belt section with sides

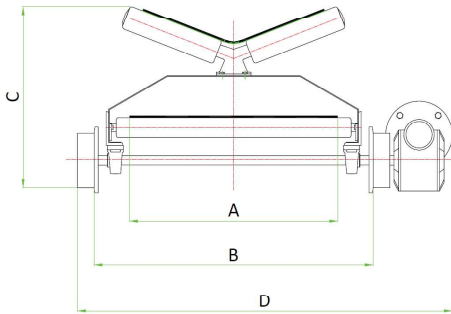


Modello Model	A	B	C	Portata T/h Capacity T/h
NCPS 300	300	380	490	11
NCPS 400	400	480	500	19
NCPS 500	500	580	510	43
NCPS 600	600	680	520	76
NCPS 800	800	880	650	130

N.B. indicative capacity calculated for transport with belt speed 44 mt/min, material specific weight 1 kg/dm<sup>3</sup>, rest angle 20°. Dimensions in millimetres.

Based on plant requirements, the conveyor belts can be made in a wheeled version.

A series of support axles with wheels are applied to the belt, one of which is equipped with independent motorization, which allow the entire machine to be moved on special tracks. Safety bumpers and limit switches complete the installation for the desired positioning and safety.



Modello Model	A	B	C	D
NC 300	300	470	410	700
NC 400	400	570	430	800
NC 500	500	670	445	900
NC 600	600	770	460	1000
NC 800	800	970	625	1200



Dimensions in millimetres. Non-binding data.

Novatech reserves the right to modify the technical data indicated above. For any limitations of the product, consult the relevant Use and Maintenance Manual.



Novatech Srl  
 S.S. 467, n.127  
 42013 S. Antonino di Casalgrande (RE)  
 Italy  
 Tel. +39 0536 823344

info@nova-tech.it  
 www.nova-tech.it