

# VARIABLE APERTURE SHUTTER BL



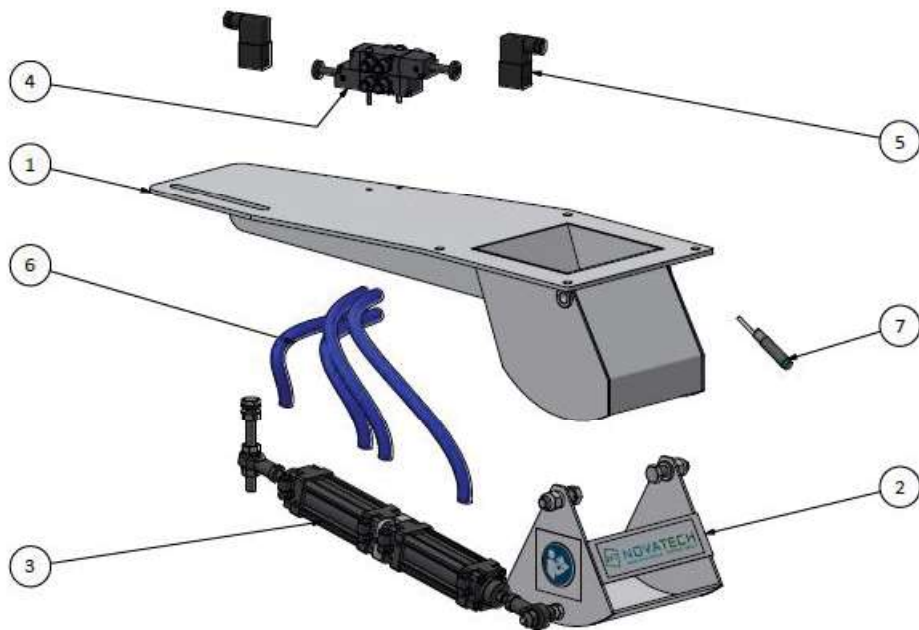
The BL variable aperture shutter built by Novatech is used for the extraction of free-flowing materials that come out of silos or hoppers (e.g. atomized clay).

The machine is mainly composed of:

- a fixed body, which acts as an inlet hopper, flanged and solidly fixed to the silo or hopper outlet.
- a pneumatic cylinder, single or combined, which regulates the opening of the shutter according to needs. It is operated by one or more solenoid valves depending on the opening configuration required.
- a mobile body hinged on the fixed body, which tilts according to the opening of the pneumatic cylinder.

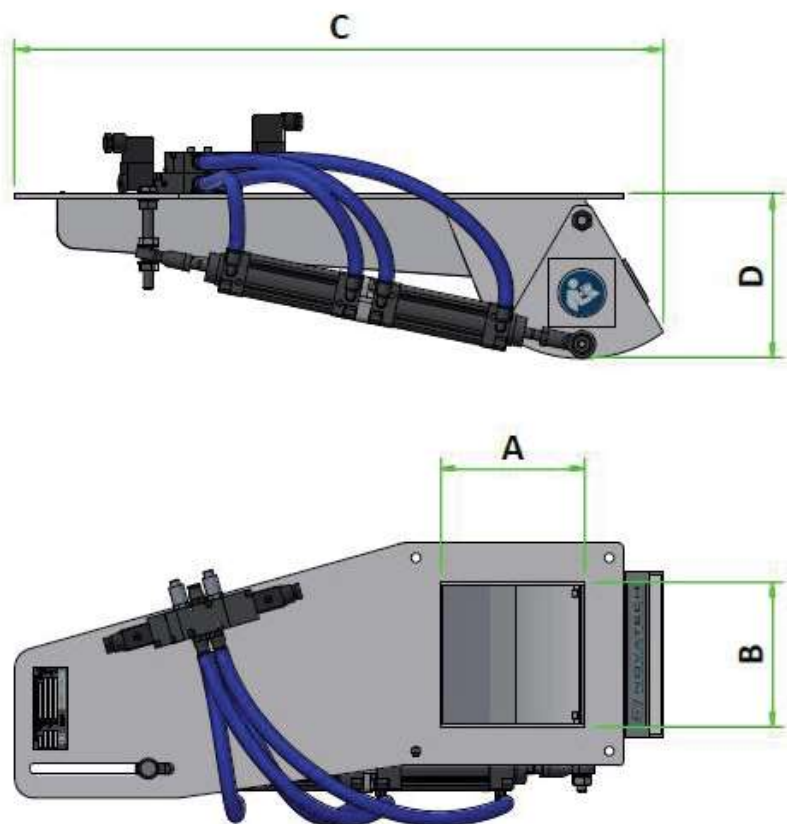
The quantity of material discharged is determined by the size of the variable aperture shutter, the type of material and the width of the opening during operation.

Flow rate adjustment is achieved by adjusting the position of the cylinder. The presence of sensors allows you to check the correct functioning of the BL variable aperture shutter.



1	FIXED BODY
2	MOBILE BODY
3	PNEUMATIC CYLINDER
4	SOLENOID VALVE
5	COIL
6	RILSAN PIPE
7	POSITION SENSOR

## MAIN FEATURES



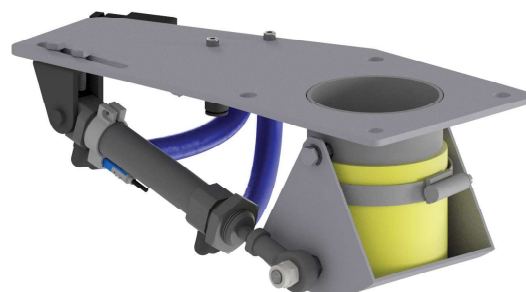
Modello Model	A	B	C	D
BL 75	75	75	500	160
BL 100	100	100	600	170
BL 150	150	150	700	200
BL 200	200	200	700	200
BL 250	250	250	800	220
BL 300	300	300	900	250
BL 150/250	150	250	700	200
BL 200/300	200	300	700	200
BL 300/500	300	500	900	250

Dimensions in millimetres. Non-binding data.



← BL 2P version, with 2 opposing cylinders

BL 1P version, with 1 magnetic cylinder and sensor →



← BL version 2A, with 2 opposed magnetic cylinders and sensors

Novatech reserves the right to modify the technical data indicated above. For any limitations of the product, consult the relevant Use and Maintenance Manual.



Novatech Srl  
S.S. 467, n.127  
42013 S. Antonino di Casalgrande (RE)  
Italy  
Tel. +39 0536 823344

info@nova-tech.it  
www.nova-tech.it